



West L. A. Connections

Where **N**urturing **E**mpowerment **W**elcoming **S**ervice Happens!

A Monthly Publication of the West Los Angeles United Methodist Church

July 2014

**West Los Angeles
United Methodist Church**
1913 Purdue Avenue
Los Angeles, CA 90025
Phone: 310-479-1379
Email: wlaumc@aol.com
Website: www.wlaumc.com

Office Hours

Monday–Friday, 9 AM to 1 PM

Pastors' Office Hours

Rev. Gary: Tues-Fri, 9 AM to 1 PM
Rev. Janet: Tues-Fri, 9 AM to 1 PM
Rev. Becky: Sat, 10 AM to 12 PM

Sunday Worship Services

◆ 9:30 AM

English Language Worship
Child Care and Sunday School

◆ 10:30 AM

Fellowship Time for both congregations

◆ 11:00 AM

Japanese Language Worship

Staff

Rev. Gary Oba, Senior Pastor
Email: obagary@gmail.com

Rev. Janet Cromwell, Associate Pastor
Email: jlcromwell8@gmail.com

Rev. Rebecca Hirata, Local Pastor
Japanese Language Ministry
Email: pastorwlaumc@yahoo.co.jp

Lina Yamaguchi,
Secretary and Newsletter Coordinator
Email: wlaumc@aol.com

Our Mission Statement

Our Mission is to promote spiritual growth - Building a community of faith and making disciples of Christ by reaching out with compassion, forgiveness and love. At West LA UMC, building a community of faith is what we are about.

Developing Mindfulness



In our Thursday Night Bible Study, we recently discussed the story of Cain and Abel, found in Genesis chapter 4. Cain and Abel were brothers, the children of Adam and Eve, the first parents. Cain and Abel had a falling out over whose offering was most pleasing to God and, as a result, Cain slew Abel, committing the first murder.

The passage yielded many lessons. Violence has a long history, as does sibling rivalry. Life often is unfair, and sometimes that unfairness can be traced back to God.

Stacey Hirose thought that the story is about our response to life's unfairness. When we are slighted, rejected, or disappointed in some way, do we allow our emotions to overtake us or are we able to pause, assess the situation, and come up with a creative response? That little bit of mindfulness can mean the difference between succeeding in life or spending the rest of our life in prison. That is what God was conveying to Cain when he said, "Why are you angry, and why has your countenance fallen? If you do well, will you not be accepted? And if you do not do well, sin is lurking at the door; its desire is for you, but you must master it" (verses 6-7).

Cain allowed his anger to close his ears to God's words, and anger mastered him and led him to kill his brother. Had he learned a mindfulness (such as prayer), he would have been open to God's words at those times, and rather than being remembered as the first murderer, he would have been revered as an example of magnanimity and restraint. What a difference mindfulness can make! It can mean the difference between life or death.

Yours in Christ,

Rev. Gary Oba

Prayers

Connecting and Nurturing through Prayer

As a community of faith, we support one another through prayer. To add or remove a prayer request, please contact one of the pastors or the church office.

If you would like a copy of the Prayer Concerns, please contact the Church Office or pick up a Sunday bulletin.

~~~~~

### **Lectionary Readings for July**

*These readings serve as the foundation for the Wednesday morning Bible Study and Sunday morning Worship Services. By reading these scripture lessons during the week, you can prepare your heart and mind for Sunday worship.*



|         |                                                                   |                                               |
|---------|-------------------------------------------------------------------|-----------------------------------------------|
| July 6  | Genesis 24:34–38,<br>42–49,58–67<br>Psalm 45:10–17 or<br>Psalm 72 | Romans 7:15–25a<br>Matthew 11:16–19,<br>25–30 |
| July 13 | Genesis 25:19–34<br>Psalm 119:105–112<br>or Psalm 25              | Romans 8:1–11<br>Matthew 13:1–9,<br>18–23     |
| July 20 | Genesis 28:10–19a<br>Psalm 139:1–12,<br>23–24                     | Romans 8:12–25<br>Matthew 13:24–30,<br>36–43  |
| July 27 | Genesis 29:15–28<br>Psalm 105:1–11, 45b                           | Romans 8:26–39<br>Matthew 13:31–33,<br>44–52  |

# Worship & Studies

Growing in Faith through Worship and Study

## July 9:30 AM Worship Services

### **July 6 –4<sup>th</sup> Sunday after Pentecost/Clergy Welcome Sunday/ Family Worship and Holy Communion**

Rev. Gary Oba preaching. Text: Genesis 24:34-38, 42-49, 58-67. Theme: When things fall neatly into place. Rev. Janet Cromwell giving children’s message.

### **July 13 –5<sup>th</sup> Sunday after Pentecost**

Rev. Gary Oba preaching. Text: Genesis 25:19-34  
Theme: The purpose in conflict.  
Rev. Janet Cromwell giving children’s message.

### **July 20 –6<sup>th</sup> Sunday after Pentecost / Worship with Praise Band**

Rev. Gary Oba preaching. Text: Genesis 28:10-19  
Theme: God’s creative ways of communicating with us.  
Rev. Janet Cromwell giving children’s message.

### **July 27 –7<sup>th</sup> Sunday after Pentecost / Vacation Bible School Sunday**

Ms. Jeri Okamoto Floyd, Rev. Janet Cromwell and VBS participants will lead worship based on the lessons learned throughout the week!

~ ~ ~ ~ ~

## **The Importance of Sunday Worship**

Sometimes we may wonder, “Why go to church on Sunday morning? Wouldn’t it be nice to sleep in or go out for breakfast instead?” Perhaps so, yet we need to remember that attending worship is one of the primary ways we build our relationship with God and others. Sunday worship is all about having an encounter with God and others that changes who we are and the direction our lives should take.

Hebrews 10:24-25 encourages believers to regularly meet and encourage each other in love and good deeds. It is true that we are influenced and become like the people with whom we associate. Therefore, Sunday mornings at church are a time to make new friends and renew old ones, to share our joys and concerns, and to thank God for another week of life. By worshipping together, common beliefs are affirmed and ways to overcome problems are shared.

There are four spiritual pillars that are necessary to have a strong Christian life: communal worship, personal prayer, Bible study, and serving others. Each pillar is needed for a firm foundation as a Christian.

So join us for worship each Sunday to encounter God and nurture one another in faith. Bring your friends too. Together, we experience God’s presence in our lives, are strengthened in our faith, and renewed in our commitment to serve others.

## Sunday School and Bible Studies

### **Children’s Sunday School**

Sunday School guides children in learning about God, the life of Jesus, and important lessons in the Bible. Children and youth are encouraged to come each week!

- |                    |                                 |
|--------------------|---------------------------------|
| Infants & Toddlers | Nursery (next to the sanctuary) |
| Age 3 to Pre-K     | Cool Kids Room 1                |
| K to Grade 3       | Explorer Room 3                 |
| Grades 4-8         | Trekker Room 2                  |
| Grades 9-12        | Youth Room 8 (located upstairs) |

### **Women’s Bible Study Group**

*Mondays 1:00-2:30 PM in Room 9.*

This summer our lessons follow the theme "The People of God Set Priorities." The first four lessons convey a message of the importance of community in reaching the goal of rebuilding the Temple. The lessons develop key aspects to living in a community as obedience and trust in God, living in a right relationship with God, and maintaining hope in God. The women take turns facilitating the class discussion using the Adult Bible Study series. New members are welcome! No meeting on July 21 because of VBS.

### **Men’s Bible Study Group**

*Tuesdays, 7:15-8:15 PM in Room 2.*

The Men’s Study Group is resuming on periodic Tuesdays. Contact Fred Hifumi for dates and times.

### **“Alive Now” Study Group**

*Wednesdays, 9:15-10:15 AM in Room 2.*

This study focuses on the lectionary text that will be the basis for Sunday morning’s sermon. (See page 2 of this Newsletter for a list of scripture lessons.) New members are always welcome to join the conversation. See Rev. Gary Oba for more information. No meeting on July 23 because VBS is in session.

### **Thursday Bible Study**

The Thursday evening Bible Study will not meet during July and August. See Rev. Gary Oba for the reading assignments when the class resumes in September.

~ ~ ~ ~ ~

### **West LA UMC Prayer Ministry**

Join us on Thursday mornings at 9:30 AM in the Sanctuary to pray for persons on the church’s prayer list. If you would like an updated copy of the Prayer List, contact Lina Yamaguchi, Church Secretary at 310-479-1379.



# Children, Youth, and Family Ministries

Supporting Families in Spiritual Growth and Discipleship



## Vacation Bible School

Monday-Friday, July 21-25

West LA UMC will host Vacation Bible School on July 21-25! We have 44 children and youth participating this year, along with many adult volunteers.

The VBS Planning Meeting and Safe Sanctuaries Training will be held on Sunday, July 6, 11:00 AM in the Learning Center. All adult volunteers need to attend this training event and update their Safe Sanctuaries documents.

The VBS Youth Prep Night will be held on Friday, July 11, 6:00-8:00 PM in the Social Hall. The Prep Night is a fun way for our Youth Assistants to learn the Bible Stories and test the craft and science projects. A simple pizza dinner will be provided.

For more information on VBS, please contact Rev. Janet Cromwell at the church office.

~~~~~

VBS Donations Needed

This year's VBS Mission Project focuses on "How WLA Church is a Good Neighbor." The children and youth will be helping Habitat for Humanity by assembling "Welcome to your New Home" care packages. We could use your help with donations for the following items to put in these care packages:



- dish towels
- candles in holders
- cleaning supplies (All Purpose Cleaners, Window Cleaners, Bathroom Cleaners, Dish Soaps, Hand Soaps, and sponges)

In addition, we need empty toilet paper/paper towel rolls and sushi containers for art projects. Please bring all of your donations to church by Sunday, July 20.

Allison Brush
VBS Craft & Mission Project Coordinator

Sawahata Scholarships Awarded

Each year, the Sawahata Scholarship recognizes students who have been involved in church activities, demonstrated scholastic ability, and completed an essay on "What being a Christian means to me." On June 15, Yosh Setoguchi and Dave Cook presented scholarships to the following four West LA UMC High School seniors as they prepare for college:

- Rachel Floyd to attend Loyola Marymount University with a major in mathematics.
- Sean Kohler to attend San Diego State University with a major in music education.
- Lily Sloan to attend UC Irvine with an undeclared major.
- Lynley Yamaguchi to attend UC San Diego with a major in cognitive science.

Congratulations to the students and their parents, families, and teachers. Good luck to our awardees for a successful and rewarding college career.

The Sawahata Committee members are: Yosh Setoguchi, David Cook, Mike Dote, Kim Sase, David Shikata, and Rev. Janet Cromwell.

~~~~~

## Asian Camp

Four West LA UMC youth will be attending Asian Camp this summer, July 27-August 1 at Camp Sierra: Stephanie Kinoshita, Sean Kohler, Makito Takahashi, and Justin Yamaguchi. Asian Camp is sponsored by the National Japanese American United Methodist Caucus. Please keep our youth – and all of the campers – in your prayers as they experience God's love and light in their lives.



~~~~~

Ohana 2.0: Families with Young Children

Saturday, July 19

Parents and grandparents are invited to bring their young children (newborns – Pre-K) to the Ohana 2.0 gathering on Saturday, July 19 at 10:30 AM in the Social Hall. This marvelous fellowship group is open to all families with young children. Enjoy play time, meaningful conversation, and a delicious potluck lunch! For more information, please contact Jane Shimotsu or the Church Office. RSVPs are requested to prepare for the potluck lunch and childcare during the discussion time for adults.





2014 Graduates

West LA UMC recognized the accomplishments of the following graduates on Sunday, June 15.

Middle School Culmination

1. Jacquelyn Floyd – promoting from Park Century School to New Roads High School.

High School Graduation

1. Rachel Floyd – graduating from Archer School for Girls to Loyola Marymount University.
2. Sean Kohler – graduating from South Pasadena High School to SDSU.
3. Madison Miketa – graduating from Mira Costa High School to UCLA.
4. Lily Sloan – graduating from Venice High School to UC Irvine.
5. Lynley Yamaguchi – graduating from Venice High School to UC San Diego.

College Graduation

1. Mark Fujii – graduating from UC Irvine with a BA in Business Economics with a minor in Accounting.
2. Laura Kobashigawa – graduating from Brown University with a BA in English.
3. Kevin Kohler – graduating from UC San Diego with a BS in Bio-Physics with minors in Mathematics and Business Management.
4. Misao Takahashi – graduating from Santa Monica Community College with an Associate's Degree in Art.
5. Dana Numamoto – graduating from UCLA with a BA in Psychology.
6. Kai Yamamoto – graduating from UCLA with a BA in Psychology.

Graduate School and higher degrees

1. Melissa Harada – graduated from UC Davis, School of Medicine with a Doctor of Medicine. She was awarded the Crystie Halsted Memorial Award for Excellence in Pediatrics and will be taking her residency training at the University of Southern California/Los Angeles County General Hospital.
2. Wesley Kobashigawa – graduated from USC with a Masters in Marriage and Family Therapy.
3. David Shikata – Completed 30 months of respiratory therapy program at Concorde Career College and is working at St. Vincent's Hospital.

We pray that God will bless each of our graduates as they move forward on their life journey.

Welcome Our New Members

West LA UMC was pleased to welcome three new members on Sunday, June 15.



Hana Won Cho was baptized as a preparatory member. She turned 5 years old in March. This past year she attended UCLA LAB School for their Spanish Immersion Pre-School and in the fall, she will attend Broadway Elementary for their Mandarin Immersion Kindergarten. Her favorite hobbies are singing, dancing, and jump-rope. Her favorite part of coming to West LA UMC is choosing snacks in the Social Hall after service. Her parents are Christine Won and John Cho.



Lisa Nicole Horii was born in Palos Verdes Estates. She attended UCLA and graduated in 2010. After working in pharmaceutical sales for the past few years, she has decided to go back to school full-time for an MBA at USC. Her favorite hobbies include reading, traveling and community service. She recently helped serve the meal at PATH and looks forward to becoming more involved at West LA UMC. Lisa often attends worship with her uncle, Steve Nagata.



Steven Kiyoshi Nagata was born in Heart Mountain, Wyoming and raised in Los Angeles. He attended UCLA and USC and graduated from the USC School of Pharmacy. Steve has worshipped at the WLA United Methodist Church since last October and is transferring his membership from another church. At the WLA United Methodist Church he has been reunited with old friends and colleagues. He usually attends church services here with his niece, Lisa Horii. He loves sharing company and meals with family and friends and is an avid USC sports fan. (Fight On!). Steve is retired and has been married (to a UCLA grad!) for over 46 years.

If you or a family member would like to learn more about being baptized or joining the church, please speak to Rev. Gary Oba, Rev. Janet Cromwell, or Rev. Becky Hirata, or call the church office at 310-479-1379.

Outreach & Social Service

Serving Our Community and World

Imagine No Malaria Update

The United Methodist Church's *Imagine No Malaria* program took center stage at the 2014 Annual Conference, held June 18-21 in Redlands. Bishop Tom Bickerton from the Western Pennsylvania Annual Conference and the leader of the denomination's Global Health Initiative, preached at the opening worship and told the gathering that the *Imagine No Malaria* effort is helping God's dream for the world become a reality. "United Methodists have helped reduce the rate of malarial deaths in Africa from one death every thirty seconds to one every sixty seconds," said Bishop Bickerton. The United Methodist Church has one of the top health delivery systems on the continent of Africa, with over 300 hospitals and clinics. Bishop Bickerton reported that The UMC has raised \$61 million of the \$75 million goal adopted at the 2008 General Conference.

The California Pacific Annual Conference has committed to raise \$3 million for the INM initiative, and West Los Angeles UMC has pledged \$13,000. If you would like to contribute to West LA's pledge, please make checks payable to West LA UMC, and on the memo line, please write *Imagine No Malaria*. "Malaria is one hundred percent preventable, treatable, and beatable," said Bishop Bickerton. "Let's beat it."

~~~~~

## California-Pacific Annual Conference

West LA UMC was represented by Stan Shimotsu, Justin Yamaguchi, Rev. Gary Oba, Rev. Janet Cromwell, and Rev. Becky Hirata at the California-Pacific Annual Conference, June 17-21, in Redlands.

During Annual Conference, West LA UMC was honored for paying 100% of our 2013 Apportionments. Simply put, an apportionment is the amount each local church gives to the Annual Conference to support international, national, and regional missions. Whereas it may be tempting to think that we can accomplish the same goals on our own, we would never be able to spread the gospel or the love of Christ as far or to as many people as we can when we are "connected". By uniting our efforts, each dollar spent goes further, reaches more people, and does more good. A great example of this connectedness is the *Imagine No Malaria* campaign to eradicate a global problem that we could not do alone.

~~~~~

Meiji Gakuin Visit

Join us as we welcome students from the Meiji Gakuin on July 23 at 4:30 PM in the Sanctuary. See Keiko Takahashi to help with the potluck dinner.

GO GREEN!

Here are some great green tips for Spring from Earth911... Part 2 of 2.

Shade your windows. It sounds simple enough, but when you consider the huge difference it makes, you'll wonder why you still have naked windows. While the sunlight is refreshing in the summer, using light colored blinds and drapes – which reflect light instead of absorbing it – can save you up to \$210 per year on heating and cooling costs.

No more excuses, start your compost! We promise it's easier than you think. For households, composting is a way to recycle certain materials and kitchen scraps and turn them into a beneficial soil amendment for home gardens and reduce waste output.

Composting is one of the most satisfying types of recycling based on the fact that, unlike those plastic bottles you send to the recycling plant, you can watch this recycling process every step of the way. In addition, the waste reduction impact can be huge.

In fact, the U.S. EPA estimates that each American throws away an average of 1.3 pounds of food scraps daily. The combination of this food waste, along with yard trimmings, makes up 24 percent of our nation's municipal solid waste stream.

What can go into the compost: Food scraps, grass clippings, plant cuttings, dry leaves, hay and straw, simple paper products (newspaper, cardboard, etc.), crushed egg shells, coffee grounds, sawdust and wood clippings.

In short, it's a no-brainer that composting will drastically reduce your waste.

Besides the process itself, knowing what ingredients should go into a backyard composting operation is essential for a successful outcome.

Submitted by Jack Ong



REPAIR! REDUCE! REUSE! RECYCLE!

~~~~~

## Nice to Meet You!

Please wear your nametags in Worship and during Coffee Fellowship to help everyone learn names and warmly greet one another. If you need a nametag, please sign up at the Welcome Table.



## Japanese Film Night

Friday, July 25, 7:30 PM, Sanctuary



Japanese Film Night on Friday, July 25, will feature "Pray for Japan," a very thoughtful, heartwarming and informative documentary film on the Great Japan Earthquake of 2011. This earthquake was the most powerful temblor ever recorded to have struck

Japan, and the fifth most powerful earthquake in the world since modern seismic magnitude record-keeping was introduced in 1935.

This 97 minute color film was produced by filmmaker, Stu Levy, an American living in Japan who filmed the aftermath during his trip to Tohoku as a volunteer. It highlights Ishinomaki, Sendai and Fukushima.

This film is free and open to the public. Come, bring your friends, and share this visual theme of vitality and hope with us.

~~~~~

Library Committee Acknowledgements

The Library Committee would like to thank the following persons for their donations: Fred and Sadie Hifumi, Harriet Woo, Tachi Okubo, Rose Honda, Cooke and Elaine Sunoo, and Dan and Jeri Floyd.

Cooke and Elaine Sunoo donated the book by Marsha Aizumi, entitled "Two Spirits, One Heart." Marsha and her son, Aiden, were recent speakers at our church about the family's personal journey of acceptance and love of their daughter coming out as a lesbian and then transitioned to male.

Dan and Jeri Floyd's family have donated 100 DVDs which are family friendly. Please visit the Library and borrow them for your family during the summer period.

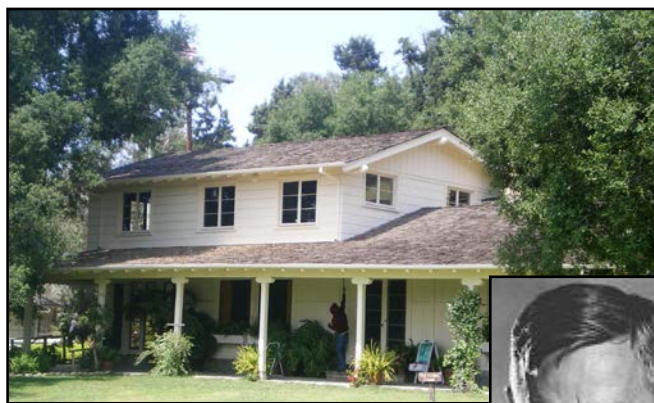
If you are unable to come to the Library on the first Sunday of the month, please see Jean Dote and she will provide you with the opportunity to borrow items. All books and DVDs can be returned to Jean when she is attending services on Sundays. The next Library Open House is Sunday, July 6, 10:45-12:00.

Thanks for your donations and please visit and support your Church Library.

~~~~~

## Rev. Frank Schaefer Update

On June 24, less than six months after Rev. Frank Schaefer had his clergy credentials taken away for officiating at his son's wedding to another man, an appeals committee of the Northeastern Jurisdiction of The United Methodist Church has reinstated him to clergy in good standing. On July 1, Rev. Schaefer will transfer to the Cal-Pac Annual Conference to serve at the Isla Vista Student Ministry in Santa Barbara. Read more about Rev. Schaefer at [www.rmnetwork.org](http://www.rmnetwork.org).



## Tanoshimi-Kai Trip

The next Tanoshimi-Kai Trip on Thursday, August 7, includes a tour of the famous Will Rogers State Park. In the early 1930s, Will Rogers was the most popular and highest paid actor in Hollywood. From his start in vaudeville theater with a trick roping act, he rose to world-wide fame as a columnist, philosopher, radio personality, and movie star. During the 1920s, he bought land in Santa Monica, where he developed a ranch. Eventually, Will Rogers owned 186 acres overlooking the Pacific Ocean, in what is now known as Pacific Palisades.

The ranch became the place where Will Rogers could relax with his family and friends, pursuing his favorite pastimes of riding and roping. At his untimely death in a plane crash in 1935, Will Rogers's ranch consisted of a 31-room ranch house, a stable, corrals, riding ring, roping arena, polo field, golf course, and hiking trails. His widow, Betty, in 1944 gave the ranch to California State Parks and it became a state park.

The second part of the trip will be lunch and a tour of the Getty Villa in Malibu.

For more information on the Tanoshimi-Kai Trip, please contact Eleanor Nakano.

~~~~~

Welcome Gifts for College Students

In recent years, the church has collected small, sample-size bottles of shampoo, conditioner, toothpaste, and other sundries to distribute to college students at the UCLA Wesley Foundation Campus Ministry. These items (like the ones provided at hotels) are assembled in small tote bags by UMW members and youth. You are invited to bring your donations to the church for this ministry of welcome and hospitality.

~~~~~

## West LA UMC is on Facebook



See the latest church news and photos by "Liking" West LA United Methodist Church on Facebook.

## United Methodist Women

Women Learning, Growing, and Serving Others



### **UMW Prepares PATH Dinner**

On Monday, June 9, several UMW members gathered to prepare another tempting meal for PATH under the guidance of Fusako Hamamoto. Those members who participated in the recent Tanoshimi Kai tour to PATH headquarters had a particular appreciation of the outreach care for the clients of PATH.

Assistant cooks were Keiko Kano, Marlene Sakamoto, Grace Seto, Frances Uchida, Grace Yamada, Sets Yamashita and Kathi Yamazaki. Delivering and serving the meal were Lina Yamaguchi and her sons, Justin and Brandon Yamaguchi, and their friends, Jared, Lindsey and Rocky Matsubayashi, and Lisa Horii. It's wonderful to have young people participate and the PATH clients really enjoyed their presence. Thanks everyone!

### **Holiday Boutique Workshop on July 18**

More than half of the year has gone by and UMW members have been working diligently to create a variety of crafts to sell at the Holiday Boutique scheduled for Saturday November 1. There is a lot more work to be done and everyone's help is needed and appreciated.

Please plan to join us for the Holiday Boutique Workshop on July 18, beginning at 9:30 AM in the Social Hall. We have lots of supplies and projects for volunteers to work on. Anyone who is crafty or interested is welcome to attend. (You do not need to be a UMW member to help with the Holiday Boutique.) If you plan to stay for lunch on July 18, please notify Toshie Setoguchi or Marlene Sakamoto so that they can prepare sufficient food for all the workers. Thank you.



## Asian Cultural Bazaar

Saturday, September 20



*Good food and friendly faces are highlights of the Asian Cultural Bazaar!*

Our annual West Los Angeles United Methodist Church **Asian Cultural Bazaar** will be held on Saturday, September 20, from 11:00 AM to 5:00 PM with food, entertainment, children's games and crafts, a silent auction, plants, door prizes and cultural displays!

Preparations are already underway, and your help is needed! **Volunteers** will be needed on Friday, September 19 to set up canopies and tables in the parking lot and Social Hall, and to assist with food preparation. Additional volunteers are needed during the Bazaar to work at food booths, as cashiers, and with clean up. If you are interested in volunteering for a two-hour shift, please see Sonia Dixon.

Now is also the perfect time to clear out your cupboards and attics to donate new or like-new items to the **Silent Auction**. Ideal Silent Auction items include Japanese dishes, bowls, and tea sets; framed original art work and prints; tickets to concerts and sporting events; gift cards for restaurant and stores; jewelry; vintage items; special dolls and toys. Items for the Silent Auction may be brought to the church now and placed in the Youth Room.

The church also collects items for the **Second Chance Store**, such as household items, toys, camping gear, and new clothing (with tags). These items may be brought to the church beginning July 28 (after VBS) and placed in the Youth Room. See Kay Yang and Elaine Sunoo if you have any questions about either the Silent Auction or Second Chance Store.

The **Face Painting Booth** is also looking for persons who would like to be trained to do face painting for kids. See Rev. Janet if you are interested.

The annual **Asian Cultural Bazaar** is a fun day for people of all ages! It provides a wonderful opportunity to welcome our friends and neighbors to our church. So, mark your calendar and invite your friends and family to a joyful day of faith, food, music and more!



# Special Offerings

Giving to God through our Tithes and Offerings



*for your generous gifts!*

## **Special Offerings**

*If you would like a list of Special Offerings, please contact the Church Office or pick up a paper copy of the Newsletter at the Church.*



## **Memorial Offerings**

*If you would like a list of Memorial Offerings, please contact the Church Office or pick up a paper copy of the Newsletter at the Church.*

## **Altar Flowers donated in May and June**

*If you would like a list of who donated the Altar Flowers in May and June, please contact the Church Office or pick up a paper copy of the Newsletter at the Church.*

# Japanese Ministry

Praising and Serving God Together

## 「全能の神に依り頼むんじゃ！」

信徒伝道者、安部哲兄（1913-1989）の口癖です。ノルウェー在住ひよこ鑑別師であった安部兄は、1960年代、共産圏伝道を皮切りに53ヶ国に伝道しました。「彼ほどのアグレッシブな伝道者は今まで見たことがない。」と評されています。どこにそんな力が湧き出するのか。自分のために死んで下さり、甦って下さったイエス様の愛が彼の力でした。

1965年、52歳で信仰をもった時、マルコ16:15の御言葉を与えられました。「全世界に出て行って、全ての造られたものに福音を宣べ伝えよ。」安部兄は、鑑別指導のため渡航するたび、聖書を配り伝道しました。ソ連、ハンガリー、ポーランド、ルーマニアなど、宣教師が入国出来ない国に信徒伝道師として働きました。1970年代から、ヨーロッパに駐在員が増え始めました。彼は在外日本人伝道を始め、ヨーロッパ各地を巡り、家庭集会を始め、今のヨーロッパ日本人教会の基礎を作りました。

2012年、「この愛に捉えられて」という安部兄の伝記が出版されました。著者は野村和子姉（ペンネーム野村和子）。安部兄の信仰と人柄に魅せられて伝記を書いたのです。野村姉は、埼玉県で生まれ、早稲田大学卒業後、出版社などで勤務して、フリーライターになりました。「愛の絶叫—山谷伝道に命を賭けた森本春子の軌跡」「マイライフ：レーナ・マリア」など沢山の本を著されています。

7月6日にゲストとして礼拝参加されます。イエス様だけが与えることの出来る癒しと力の証をして下さいます。良い分かち合いの時間が持たれるように祈りに覚えましょう。

平田

On July 6<sup>th</sup>, Ms. Kazuko Nomura, a famous Japanese author, is visiting our church from Tokyo. In 2012, she wrote a biography of Mr. Satoshi Abe (1913-1989), a highly trained chick sexer and a lay evangelist who lived in Norway. She decided to write about Mr. Abe, because she was so touched by Mr. Abe's committed Christian life.

In 1965, Mr. Abe became a Christian at age 52. God touched his life with the Scripture "Go into all the world and preach the good news to all creation." (Mark 16:15) Whenever Mr. Abe was invited to teach the chick sexing method in Russia, Hungary, Poland, Romania, he brought many Bibles secretly and shared the Good News. From 1970's, as Japanese businessmen increased in Europe, he evangelized and began home Bible study groups in various cities. Today, they all became the Japanese-European churches!

Everyone said "nobody has seen an aggressive evangelist like Mr. Abe." But, Mr. Abe always said "zenno-no kami ni yoritanomunja!" (We just rely on our God the Almighty!)

May the Lord bless our time with Ms. Nomura as she shares how God touched the life of Mr. Abe.

Pastor Becky Hirata 平田

## Nichigo's July Calendar



|            |            |                                              |
|------------|------------|----------------------------------------------|
| July 6     | 11:00 AM   | Nichigo Worship                              |
|            | 12:00 PM   | Fellowship                                   |
| July 13    | 11:00 AM   | Nichigo Worship                              |
|            | 12:00 PM   | Nichigo Council Meeting                      |
|            | 1:00 PM    | Administrative Council Meeting               |
| July 18    | 9:30 AM    | UMW Holiday Boutique Workshop in Social Hall |
| July 20    | 11:00 AM   | Nichigo Worship                              |
|            | 12:00 PM   | Prayer Group                                 |
| July 21-27 | 10:00-1:30 | Vacation Bible School                        |
| July 23    | 4:30 PM    | Meiji Gakuin Program and Potluck Dinner      |
| July 25    | 7:30 PM    | Japanese Film Night                          |
| July 27    | 11:00 AM   | Nichigo Worship                              |
|            | 12:00 PM   | Nichigo Bible Study                          |

# July 2014

| Sunday                                                                                                                                                                                                                             | Monday                                                                                      | Tuesday                                                                | Wednesday                                                                                                       | Thursday                                             | Friday                                                        | Saturday                                                                                     |
|------------------------------------------------------------------------------------------------------------------------------------------------------------------------------------------------------------------------------------|---------------------------------------------------------------------------------------------|------------------------------------------------------------------------|-----------------------------------------------------------------------------------------------------------------|------------------------------------------------------|---------------------------------------------------------------|----------------------------------------------------------------------------------------------|
| <b>Notes:</b> <ul style="list-style-type: none"> <li>• No Choir Rehearsals in July. Choir Rehearsals will resume on Tuesday evenings in August</li> <li>• Thursday Night Bible Study will be on recess until September.</li> </ul> |                                                                                             | 1<br>11:30am 80+ Women's Luncheon @ Hop Li<br><br>No Choir             | 2<br>9:15am "Alive Now" Study<br>10:30am Tai-Chi Class<br><br>5:30pm Promise AA Group                           | 3<br>9:30am Prayer Meeting<br>10:30am Tai-Chi Class  | 4 Independence Day<br>Church Office Closed                    | 5                                                                                            |
| 6 Family Worship / Holy Communion<br>9:30am English Worship<br>11:00am Japanese Worship<br>11:00am Church Library Open<br>11:00am VBS Planning & Safe Sanctuaries Training                                                         | 7<br><br>1:00pm Women's Bible Study<br>6:30-9:00pm Kelton AA Mtg                            | 8<br><br>No Choir                                                      | 9<br>9:15am "Alive Now" Study<br>10:30am Tai-Chi Class<br><br>5:30pm Promise AA Group<br>7:30pm Finance Meeting | 10<br>9:30am Prayer Meeting<br>10:30am Tai-Chi Class | 11<br><br>6:00pm VBS Youth Prep Night                         | 12<br><br>9:00am Trustee's Meeting                                                           |
| 13<br>9:30am English Worship<br>9:45am Sunday School & Youth<br>11:00am Japanese Worship<br>1:00pm Administrative Council                                                                                                          | 14<br><br>1:00pm Women's Bible Study<br>6:00 PATH Meal Service<br>6:30-9:00pm Kelton AA Mtg | 15<br>8:30am Fat Tuesday Men's Group Breakfast Meeting<br><br>No Choir | 16<br>9:15am "Alive Now" Study<br>10:30am Tai-Chi Class<br><br>5:30pm Promise AA Group                          | 17<br>9:30am Prayer Meeting<br>10:30am Tai-Chi Class | 18<br>9:30am UMW Holiday Boutique Craft Workshop              | 19<br>10:30am Ohana 2.0 Families with Young Children Potluck<br><br>4pm Praise Band Practice |
| 20<br>9:30am English Worship<br>9:45am Sunday School & Youth<br>11:00am Japanese Worship<br>11:00am VBS Set Up                                                                                                                     | 21<br>Vacation Bible School Begins<br><br>No AA Meeting                                     | 22<br>Vacation Bible School<br><br>No Choir                            | 23<br>Vacation Bible School<br><br>4:30 Meiji Gakuin Visit<br><br>No AA Meeting                                 | 24<br>Vacation Bible School                          | 25<br>Vacation Bible School<br><br>7:30pm Japanese Film Night | 26<br>9:30am Worship Committee Meeting                                                       |
| 27 Asian Camp Participants Depart / VBS Sunday<br>9:30am English Worship<br>9:45am Sunday School & Youth<br>11:00am Japanese Worship                                                                                               | 28<br><br>1:00pm Women's Bible Study<br>6:30-9:00pm Kelton AA Mtg                           | 29<br><br>No Choir                                                     | 30<br>9:15am "Alive Now" Study<br>10:30am Tai-Chi Class<br><br>5:30pm Promise AA Group                          | 31<br>9:30am Prayer Meeting<br>10:30am Tai-Chi Class |                                                               |                                                                                              |

**West LA UMC presents:**

**Workshop of Wonders  
Imagine & Build with God**

**Vacation Bible School  
July 21-25**



*We are looking forward to an exciting week with our children and youth as we Imagine & Build with God! Please be in prayer for all of participants and volunteers as we seek to learn and deepen our relationship with God through Christ.*

---

**West LA United Methodist Church**

1913 Purdue Avenue, Los Angeles, CA 90025  
wlaumc.com ☎ 310-479-1379

---

*You can also view this newsletter online at  
www.wlaumc.com*

*Change Service Requested*

*July 2014*

*1913 Purdue Avenue  
Los Angeles, CA 90025*

*West Los Angeles United Methodist Church*

Non-Profit Organization  
U.S. POSTAGE  
PAID  
Santa Monica, CA  
Permit No. 27833